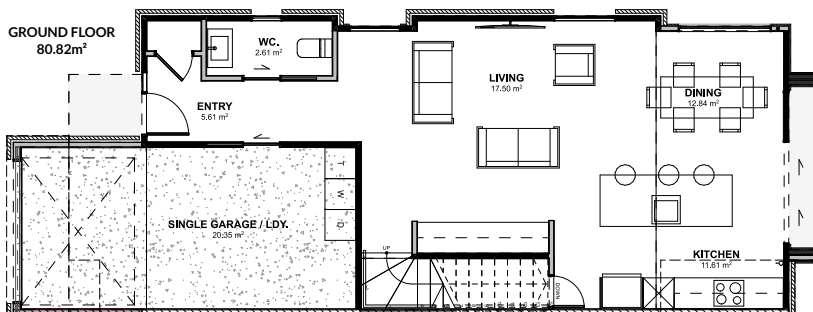




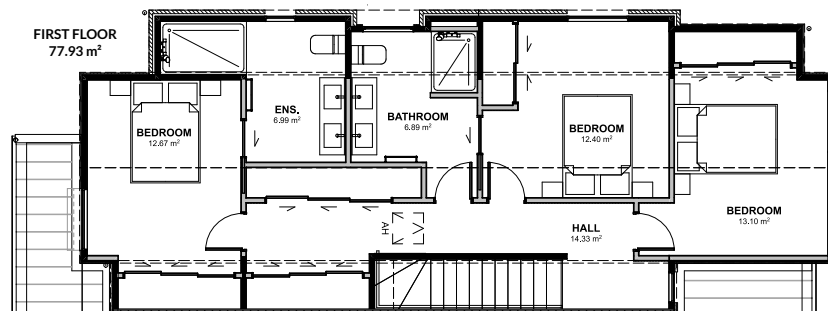
HOUSE & LAND PACKAGE

BOURN BROOK, ROTOTUNA
TOWN HOUSE - UNIT 1



GROUND FLOOR

FIRST FLOOR



Bedrooms 3	Bathrooms 2.5	Living Areas 1	Garage Spaces 1	Floor Area 159 m ²	Land Size 184 m ²
---------------	------------------	-------------------	--------------------	----------------------------------	---------------------------------

\$899,000



0508 2 VENTURE
www.venturedevelopments.co.nz
1/16 Ashley Place, Papamoa Beach, Papamoa 3118



Prices are based on a flat site and existing council stormwater and sewage connections. Earthworks not included.